



Max. Gross Machine Weight	81,800 kg
Net Machine Weight	36,800 kg
Payload	45,000 kg
Engine	QSX15
Rated Power	388 kW (520 hp / 528 ps) @ 2,100 rpm
Struck Capacity	21.8 m ³
Heaped Capacity (SAE 2:1)	29.8 m ³

DR50C MINING TRUCK

DR50C SPECIFICATIONS >>>

ENGINE

Emission Regulation	Tier 3 / Stage III
Maker	Cummins
Model	QSX15
Rated Power	388 kW (520 hp / 528 ps) @ 2,100 rpm
Peak Torque	2,365 N·m @ 1,400 rpm
Displacement	15 L (4.0 gal)
Number of Cylinders	6

TRANSMISSION

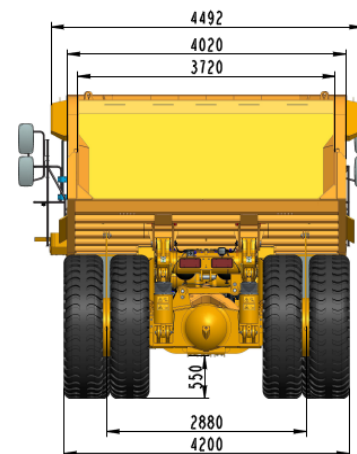
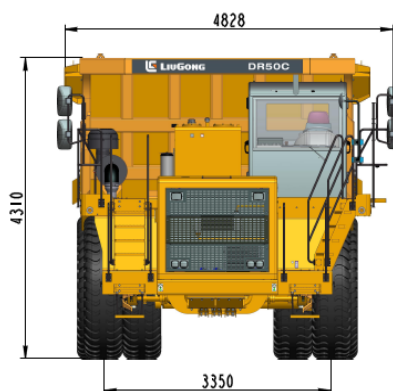
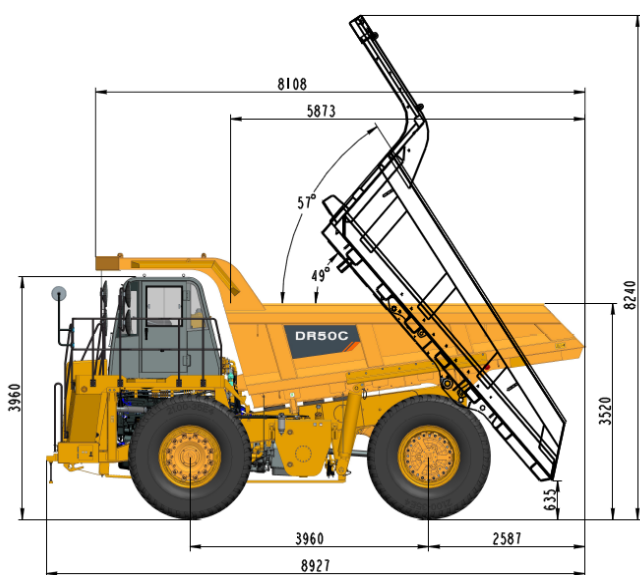
Model	Allison 5610/4800	
Gear	Driving Ratio	Max. Travel Speed
F1	4.00	8 km/h
F2	2.68	14 km/h
F3	2.01	18 km/h
F4	1.35	28 km/h
F5	1.00	38 km/h
F6	0.67	56 km/h
R1	5.15	6 km/h
R2	3.46	10 km/h

REAR AXLE

Final Drive Reduction Ratio	3.417
Wheel Gear Reduction Ratio	6
Total Reduction Ratio	20.5

LIFTING SYSTEM

Lifting Time	11.5 sec
Lowering Time	9 sec



PERFORMANCE

Max. Steering Angle	38°
Max. Swing Angle	±6.5°
Front Suspension Stroke	305 mm
Rear Suspension Stroke	207 mm

DUMP BODY

Bottom Plate Thickness	16 mm
Front & Side Plate Thickness	10/10 mm
Struck Capacity (SAE)	21.8 m ³
Heaped Capacity (2:1) (SAE)	29.8 m ³

TIRES

Rim Size	15.00/3.0-35
Tire Size	21.00-35/36PR(E4)

SERVICE CAPACITY

Fuel Tank	550 L	145.3 gal
Crankcase	60 L	15.9 gal
Transmission	68 L	18.0 gal
Cooling System	82 L	21.7 gal
Hydraulic System	16 L	4.2 gal
Wheel Gear Reduction (Total)	45 L	11.9 gal
Differential	50 L	13.2 gal
Front Suspension (Each)	15 L	4.0 gal
Rear Suspension (Each)	17 L	4.5 gal

WEIGHT DISTRIBUTION

Rated Load	Front Axle	Rear Axle
Empty Load	52%	48%
Full Load	34%	66%

Guangxi Liugong Machinery Co., Ltd.

No. 1 Liutai Road, Liuzhou, Guangxi 545007, PR China
T: +86 772 3886124 E: overseas@liugong.com
www.liugong.com

Specifications and designs are subject to change without notice. Machines shown may include optional equipment. Liugong standard and optional equipment may vary from region to region. Please consult your Liugong dealer for information specific to your area. Engine power kW is converted to horsepower (1 kW=1.3596 ps and 1 kW=1.3410 hp) in this file.

08/2020 Designed by LiuGong
Replace the previous versions of 02/2020