



TowTrack



WWW.TRACKEDMACHINES.COM



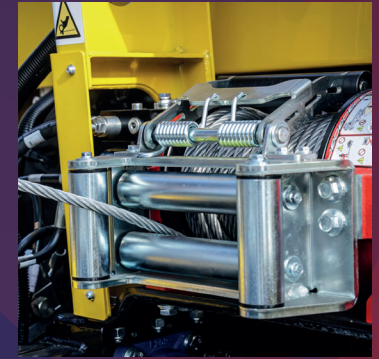
REMOTE CONTROLLED TRACKED VEHICLE FOR VEHICLE HANDLING

TowTrack is a tracked tow truck for the handling of road vehicles. The tracks ensure stability on all types of terrain, and thanks to its compact size, it can be loaded onto a truck along with its cargo. With cutting-edge technological solutions, this unique tool allows vehicles to be moved without towing them, by fully lifting them. It is therefore essential for the recovery of electric and autonomous vehicles.



STRENGTHS

Integrated winch.



Movement on all types of terrain.



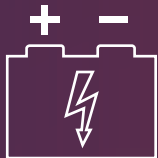
Remote controlled: safe and complete control by the operator at every stage of use.



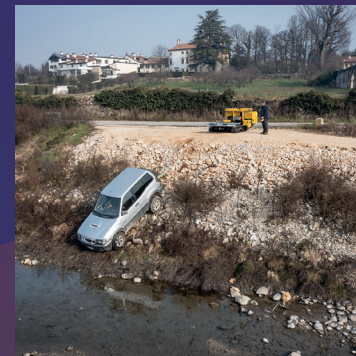
Lifting capacity up to 3500 kg.



Essential for the recovery of electric and autonomous vehicles.



High maneuverability in tight and low spaces (garages, undergrounds, or multi-story).

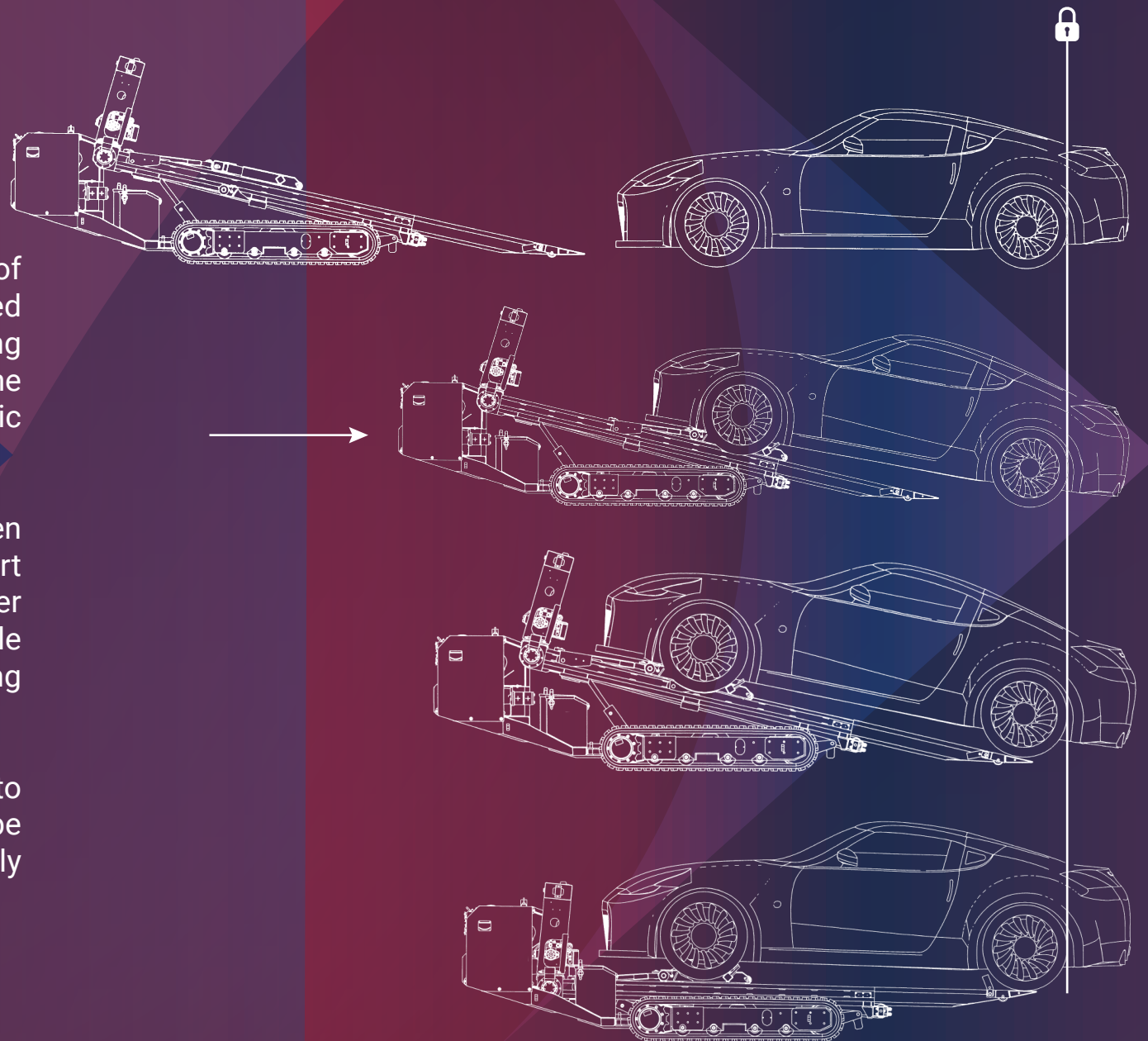


AUTOMATIC LOADING CYCLE

The automatic loading cycle of TowTrack allows the vehicle to be loaded without moving it from its starting position. This feature is essential for the recovery of automatic or electric vehicles.

Thanks to the synchronization between the forward movement of the lower part of TowTrack and the ascent of the upper trolley, the vehicle is recovered while remaining stationary in its starting position.

The automatic loading cycle helps to limit further damage that could be caused by dragging a vehicle with fully locked wheels.



REMOTE CONTROL

Tow Track is equipped with a remote control with a range of up to 100 meters, ensuring the operator has safe and complete control at every stage of use.

The TowTrack, TowTrack XL, and Electric models feature a remote control system that allows the operator to manage operations safely, avoiding any risks associated with the work activity and without the need to approach the vehicle being lifted.





TOWTRACK



TOWTRACK

Load capacity	2500 kg
Maximum speed	3,2 km/h
Maximum slope	17°
Machine weight	1850 kg

ENGINE

Brand	VANGUARD
Model	35 HP
Fuel	GASOLINE
Power	35 CV (26,11 KW)

REMOTE CONTROL

Brand	IMET
Radio frequency	2.4 6HZ
Range	100 m
Autonomy	14 h
Weight	1450 g

TOWTRACK DIESEL



TOWTRACK DIESEL

Load capacity	2500 kg
Maximum speed	3,2 km/h
Maximum slope	17°
Machine weight	2300 kg

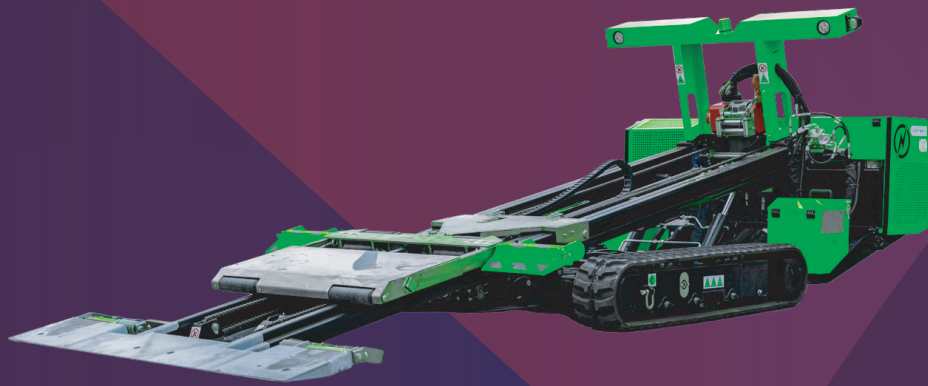
ENGINE

Brand	KOHLER
Model	KSD-TCH 1403
Fuel	DIESEL
Power	25.7 CV (18.9 KW)

REMOTE CONTROL

Brand	IMET
Radio frequency	2.4 6HZ
Range	100 m
Autonomy	14 h
Weight	1450 g

TOWTRACK ELETRIC



TOWTRACK ELETRIC

Load capacity	2200 kg
Maximum speed	3,2 km/h
Maximum slope	17°
Machine weight	2170 kg

ENGINE

Brand	CFR
Model	BRE
Fuel	ELETRIC
Power	18 KW

REMOTE CONTROL

Brand	IMET
Radio frequency	2.4 GHz
Range	100 m
Autonomy	14 h
Weight	1450 g

TOWTRACK XL



TOWTRACK XL

Load capacity	3500 kg
Maximum speed	3,2 km/h
Maximum slope	17°
Machine weight	3500 kg

ENGINE

Brand	HYUNDAI
Model	DM01 ST.5
Fuel	DIESEL
Power	55 CV (41 KW)

REMOTE CONTROL

Brand	IMET
Radio frequency	2.4 GHz
Range	100 m
Autonomy	14 h
Weight	1450 g





GIACCHE VERDI
Associazione a cavallo per la protezione ambientale e civile

RAM

HEMI

5339.6

SAFETY SYMBOLS



TRACKED MACHINES ITALIA S.R.L.

Via A. Volta, 24 - 37026 Settimo di Pescantina (VR)

www.trackedmachines.com

info@trackedmachines.com | +39 388 4066531