



|                                 |                                      |
|---------------------------------|--------------------------------------|
| <b>Engine</b>                   | Cummins QSL9.3                       |
| <b>Gross Power</b>              | 154 kW (207 hp / 209 ps) @ 2,000 rpm |
| <b>Net Power</b>                | 140 kW (188 hp / 190 ps) @ 2,000 rpm |
| <b>Blade Capacity</b>           | 4.5 m <sup>3</sup>                   |
| <b>Operating Weight</b>         | 17,500 kg                            |
| <b>Lift above Ground</b>        | 1,100 mm                             |
| <b>Blade Depth below Ground</b> | 510 mm                               |

# LD20D BULLDOZER

TOUGH WORLD. TOUGH EQUIPMENT.

# LD20D SPECIFICATIONS >>>

## ENGINE

|                              |  |
|------------------------------|--|
| Model                        | Cummins QSL9.3                           |
| Emission regulation          | Tier 3                                   |
| Gross power @ RPM (ISO 9249) | 154 kW (207 hp / 209 ps) @ 2,000 rpm     |
| Net power @ RPM (ISO 9249)   | 140 kW (188 hp / 190 ps) @ 2,000 rpm     |
| Peak torque                  | 1,000 N·m                                |
| Number of cylinders          | 6  |
| Displacement                 | 9.3 L                                    |
| Aspiration                   | EFI turbocharged, air-to-air intercooled |
| Cooling type                 | Water                                    |

## ELECTRICAL SYSTEM

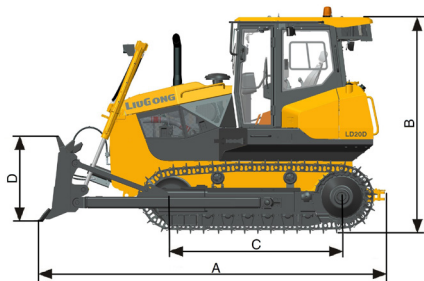
|                   |            |
|-------------------|------------|
| System voltage    | 24 V       |
| Alternator output | 55 amps    |
| Battery rating    | 120 amp-hr |
| Battery CCA       | 850 amp-hr |
| No. of batteries  | 2          |

## DRIVE TRAIN

|                       |   |
|-----------------------|---|
| Transmission          | Power shift                             |
| Torque converter      | 3 element - single stage, single phase  |
| Max travel speed, fwd | 10.6 km/h                               |
| Max travel speed, rev | 12.6 km/h                               |
| No. of speeds         | 3 forward and 3 reverse                 |
| Steering              | Clutch/brake                            |
| Service brake         | Wet multi disc type; Hydraulic actuated |
| Parking brake         | Shoe/drum type; Mechanical              |

## UNDERCARRIAGE

|                          |                                 |
|--------------------------|---------------------------------|
| Track type               | Steel shoe with single grouser  |
| Referenced shoe width    | 510 mm (560/610 mm is optional) |
| No. of shoes             | 39                              |
| No. of upper rollers     | 2                               |
| No. of bottom rollers    | 6                               |
| Link pitch               | 203 mm                          |
| Shoe ground pressure     | 63.7 kPa                        |
| Suspension type          | Equalizer bar                   |
| Track tension adjustment | Grease                          |



## HYDRAULIC SYSTEM

|                       |                         |
|-----------------------|-------------------------|
| System type           | Open                    |
| Main pump type        | One tandem gear pump    |
| Main pump total flow  | 178 L/min               |
| Relief pressure, main | 17.5±0.5 MPa            |
| Cylinders             | Dual-acting piston type |

## BLADE

|                             |                    |
|-----------------------------|--------------------|
| Blade type (referenced)     | Straight           |
| Blade capacity (referenced) | 4.5 m <sup>3</sup> |
| Blade depth below ground    | 510 mm             |
| Blade lift above ground     | 1,100 mm           |
| Blade angle, left           | 6.8°               |
| Blade angle, right          | 6.9°               |
| Blade tilt                  | 445/470 mm         |

## DIMENSIONS

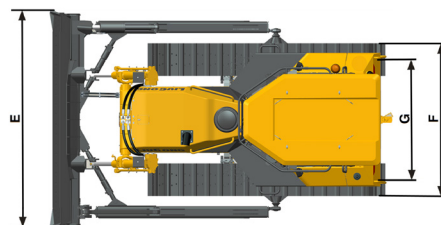
|                          |          |
|--------------------------|----------|
| A Overall Length         | 5,370 mm |
| B Height to Top of Cab   | 3,312 mm |
| C Track Length on Ground | 2,640 mm |
| D Blade Height           | 1,130 mm |
| E Blade Width            | 3,422 mm |
| F Width over Track       | 2,390 mm |
| G Track Gauge            | 1,880 mm |

## OPERATING WEIGHTS

|                  |           |
|------------------|-----------|
| Operating weight | 17,500 kg |
|------------------|-----------|

## SERVICE CAPACITIES

|                                   |       |
|-----------------------------------|-------|
| Fuel tank                         | 420 L |
| Engine oil                        | 24 L  |
| Cooling system                    | 45 L  |
| Hydraulic reservoir               | 100 L |
| Hydraulic system total            | 100 L |
| Transmission and torque converter | 110 L |
| Final drives, each                | 40 L  |



Guangxi Liugong Machinery Co., Ltd.

No. 1 Liutai Road, Liuzhou, Guangxi 545007, PR China  
T: +86 772 3886124 E: overseas@liugong.com  
www.liugong.com

09/2021 Designed by LiuGong

Specifications and designs are subject to change without notice. Machines shown may include optional equipment. LiuGong standard and optional equipment may vary from region to region. Please consult your LiuGong dealer for information specific to your area. Engine power kW is converted to horsepower (1 kW=1.3596 ps and 1 kW=1.3410 hp) in this file.