



<b>Engine</b>	Cummins QSM15
<b>Rated Power</b>	563 kW (755 hp / 766 ps) @ 2,100 rpm
<b>Maximum Dig Depth</b>	7,400 mm
<b>Standard Bucket Capacity</b>	5.6 m <sup>3</sup>
<b>Operating Weight</b>	78,500 kg

# 975F EXCAVATOR

# 975F SPECIFICATIONS >>>

## PERFORMANCE PARAMETERS

Operating Weight	78,500 kg
Std. Bucket Heaped Capacity (Referenced)	5.6 m <sup>3</sup>
Maximum Travel Speed	4.7 km/h
Swing Speed	6.8 r/min
Drawbar Pull	495 kN
Bucket Digging Force (ISO)	384 kN
Arm Digging Force (ISO)	350 kN

## ENGINE

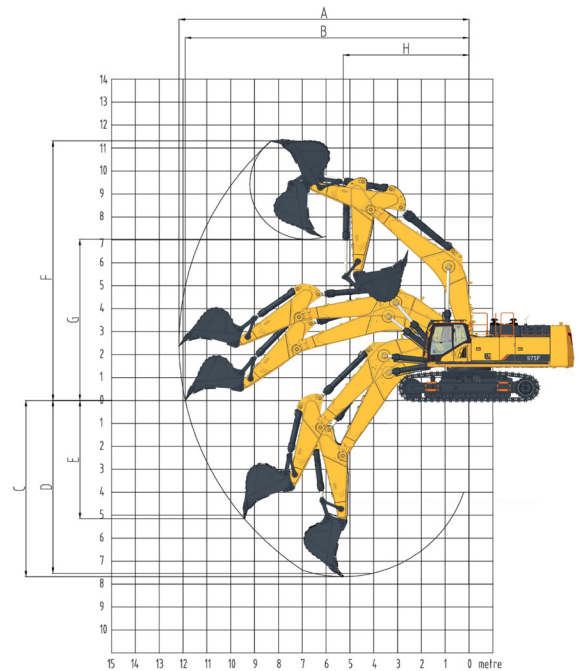
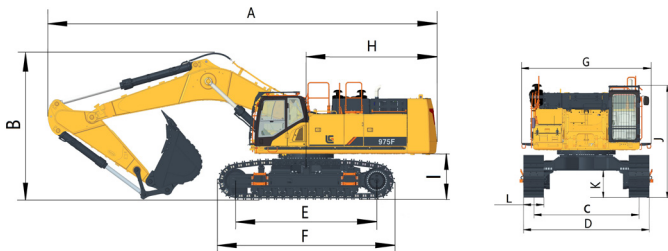
Manufacturer	Cummins
Model	QSM15
Rated Power	563 kW (755 hp / 766 ps) @ 2,100 rpm
Peak Torque	3,000 N·m @ 1,400 rpm
Number of Cylinders	6
Displacement	14.5 L

## UNDERCARRIAGE

Shoe Width	650 mm
Number of Shoes per Side	48
Number of Upper Rollers per Side	3
Number of Bottom Rollers per Side	8

## DIMENSION

A. Transport Length	13,086 mm
B. Transport Height	4,961 mm
C. Track Gauge	3,350 mm
D. Transport Width	4,252 mm
E. Length to Center of Rollers	4,750 mm
F. Track Length	5,990 mm
G. Overall Width of Upper Structure	4,115 mm
H. Tail Swing Radius	4,490 mm
I. Counterweight Ground Clearance	1,587 mm
J. Cab Height	3,653 mm
K. Min. Ground Clearance	917 mm



## WORKING RANGE

Boom Length	7,060 mm
Arm Length	2,900 mm
A. Max. Digging Reach	12,220 mm
B. Max. Digging Reach on Ground	11,950 mm
C. Max. Digging Depth	7,400 mm
D. Max. Digging Depth, 2.44 m (8') Level	7,250 mm
E. Max. Vertical Wall Digging Depth	3,870 mm
F. Max. Cutting Height	11,530 mm
G. Max. Dumping Height	7,330 mm
H. Min. Front Swing Radius	4,980 mm

## SERVICE CAPACITIES

Fuel Tank	1,100 L
Engine Oil	52 L
Cooling System	72 L
Hydraulic Reservoir	360 L
Hydraulic System Total	680 L

## HYDRAULIC SYSTEM

Main Pumps Total Flow	2×504 L/min
Relief Pressure, main	34.3 MPa
Relief Pressure, boost	37.3 MPa

Guangxi Liugong Machinery Co., Ltd.

No. 1 Liutai Road, Liuzhou, Guangxi 545007, PR China  
T: +86 772 3886124 E: overseas@liugong.com  
www.liugong.com

Specifications and designs are subject to change without notice. Machines shown may include optional equipment. Liugong standard and optional equipment may vary from region to region. Please consult your Liugong dealer for information specific to your area. Engine power kW is converted to horsepower (1 kW=1.3596 ps and 1 kW=1.3410 hp) in this file.

08/2024 Designed by LiuGong