

Engine	Deutz Weichai
Gross Power	70 kW (95 hp) @ 2,200 rpm
Net Power	68 kW (92.5 hp) @ 2,200 rpm
Maximum Speed	36 km/h
Standard Loader Bucket Capacity Standard	1 m ³
Backhoe Bucket Capacity	0.25 m ³
Operating Weight	8,400 kg

777A

BACKHOE LOADER

 **LIUGONG**



TOUGH WORLD, TOUGH EQUIPMENT

777A SPECIFICATIONS >>>

ENGINE

Emission Regulation	Tier 2 / Stage II
Make	Deutz Weichai
Model	WP4G95E221
Gross Power	70 kW (95 hp) @ 2,200 rpm
Net Power	68 kW (92.5 hp) @ 2,200 rpm
Peak Torque	383 Nm @ 1,500 rpm
Displacement	4.5 L

ELECTRICAL SYSTEM

System Voltage	12 V
Battery Rating	95 amp - hr

DRIVE TRAIN

Number of Drive Wheels	2 wd / 4 wd
1st Maximum Speed, fwd/rev	5.9 km/h
2nd Maximum Speed, fwd/rev	10.7 km/h
3rd Maximum Speed, fwd/rev	20.5 km/h
4th Maximum Speed, fwd/rev	36 km/h
Turning Radius Outside of Front Tire	4,225 mm
Turning Radius Outside of Bucket	5,554 mm

BRAKES

Service Brake Type	Wet disc
Service Brake Actuation	Hydraulic service

TIRES

Front Tire Size	16/70-20 WLT-R4
Rear Tire Size	19.5 L - 24 14PR TL R - 4

HYDRAULIC SYSTEM

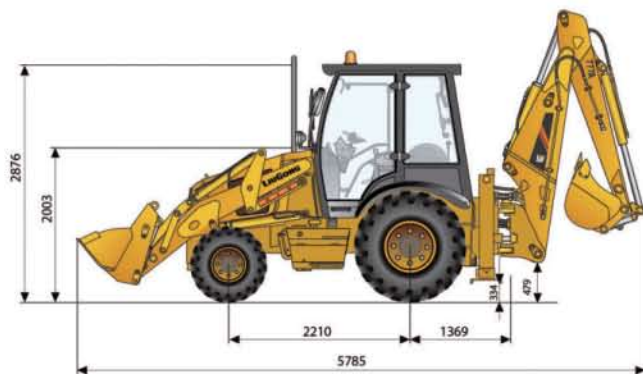
Circuit Type	Open
Total Flow	143 L/min
Main Relief Pressure	24 MPa
Pump Type	Tandem gear pump
Steering Type	Priority valve

OPERATING WEIGHTS

Operating Weight	8,400 kg
------------------	----------

LOADER PERFORMANCE

Standard Bucket Type (referenced)	General bucket	1 m ³
Standard Bucket Heaped Capacity ISO (referenced)		1 m ³



Standard Bucket Width (referenced)	2,260 mm
Lift Capacity at Full Height	33.2 kN
Bucket Breakout Force	59.6 kN
Maximum Dump Angle at Full Height	45°
Dump Height at Maximum Angle	2,691 mm
Dump Reach at Full Height Discharge	713 mm
Boom Lift Capacity, end, at ground	47.3 kN
Maximum Dig Depth	89 mm

BACKHOE PERFORMANCE

Standard Bucket Type (referenced)	general bucket	0.25 m ³
Standard Bucket Heaped Capacity ISO (referenced)		0.25 m ³
Standard Bucket Width (referenced)	762 mm	
Maximum Dig Depth	4,440 mm	
Reach From Swing Pivot at Ground	5,433 mm	
Turning Angle of Bucket	182°	
Bucket Digging Force	58.2 kN	
Dipper Digging Force, standard stick	37.5 kN	
Loading Height	3,680 mm	
Loading Reach from Swing Pivot	2,130 mm	

SERVICE CAPACITIES

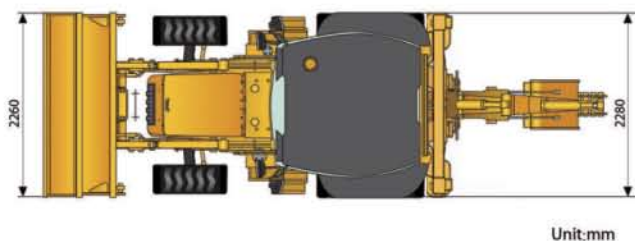
Fuel Tank	130 L
Engine Oil	13 L
Cooling System	15 L
Hydraulic Reservoir	130 L
Hydraulic System Total	170 L
Transmission and Torque Converter	16 L
Axle, front	6.9 L
Axle, rear	17.5 L

STANDARD EQUIPMENT

WP4G95E221 Engine
Carraro Transmission
Enclosed Cab, ROPS / FOPS, with AC
Auxiliary Hydraulic Kit
Carraro 4 x 4 Axles
Boom Interlock
General load Bucket 1 m ³
Seat belt
Rotary Beacon

OPTIONAL EQUIPMENT

Open Cab, ROPS / FOPS
Hydraulic shear
Vibratory Tamper
Hydraulic Hammer
Carraro 4 x 2 Axles
4 in 1 Load Bucket 1.0 m ³
Telescopic Boom



Unit:mm

Guangxi Liugong Machinery Co., Ltd.

No. 1 Liutai Road, Liuzhou, Guangxi 545007, P.R China
T: +86 772 3886124 E: overseas@liugong.com
www.liugong.com

05/2014 Designed by LiuGong

Specifications and designs are subject to change without notice. Machines shown may include optional equipment.